

# Michel François

## *Nineteen Thousand Posters.*

### *1994-2016*

12 March – 24 July 2016

Opening at le château de Rentilly on Saturday 12 March, from 4pm\*

Curator : Xavier Franceschi



Michel François, *Speaker's Corner 1*, 2006  
Collection du frac île-de-france, © Adagp, Paris

Contacts :

Isabelle Fabre, Communications Manager > +33 1 76 21 13 26 > ifabre@fraciledefrance.com

Magda Kachouche, Press Officer > +33 6 84 45 47 63 > mkachouche@fraciledefrance.com

**le château, Rentilly**

Parc culturel de Rentilly  
1, rue de l'Etang  
77 600 Bussy-Saint-Martin  
T +33 (0)1 60 35 46 72

Le frac île-de-france reçoit le soutien du Conseil régional d'Île-de-France, du ministère de la Culture et de la Communication – Direction régionale des affaires culturelles d'Île-de-France et de la Mairie de Paris. Membre du réseau Tram. de Platform.

## Press release

The frac île-de-france's latest exhibition at the Château de Rentilly looks at a particular aspect of the work of the Belgian artist Michel François. While François's work is essentially sculptural, it uses a wide range of media, from drawing and installation to video and, most importantly, photography.

Epitomising this key role, each of the artist's exhibitions since 1994 has been accompanied by the publication of a large-scale (120 x 180 cm) poster based on one of his photographs. The exhibition at the Château de Rentilly presents this ongoing series of works, which has recently entered the collection of the frac île-de-france.

The posters have previously been shown at the Centre de Création Contemporaine Olivier Debré in Tours and the Musée des Arts Contemporains, Site du Grand-Hornu (Belgium). In both instances, they had been arranged into piles on the floor, encouraging exhibition goers to take home one or more copies. At the Château de Rentilly, visitors will also be able to appropriate the artist's work by leaving the venue with a poster in hand.

While this protocol, in a nod to Felix Gonzalez Torres's unlimited editions, asks questions around authorship and the status and permanence of art, François's images/posters derive from a fundamentally sculptural approach. Beyond their materiality in the exhibition space (which can take different forms including, for instance, an all-over wallpaper), the scenes they depict appear to define themselves precisely through their reality and physical presence. The construction of these photographs echoes the artist's sculptural practice in that it radiates a strong sense of tension, contrast and density. Similarly, their framing, at times carefully constructed and at others more intuitive, evidences a particular relationship to reality, that is, the desire to sample reality so as to reveal the plasticity of the visible world.

A frontal view of a ghost tower, young boys suspended in the air, a Hitchcockian vision of a woman in black, massive granite rocks, bodies in various liquids, holes, openings, gestures, attitudes... François's images visualise the artist's concerns in his approach of space and bodies, or the relationship he entertains with the world as a sculptor through and through.

← frac  
↗ île-de-france  
↙ le château  
rentilly

MARNEetGONDOIRE

communauté d'agglomération

  
Parc culturel de Rentilly

Michel François (b. 1956 in Saint-Trond, Belgium) lives and works in Brussels. Together with Ann Veronica Janssens he represented Belgium at the Venice Biennale in 1999, and his work was presented at documenta IX in 1992. Recent solo exhibitions include Pieces of Evidence at Ikon Gallery in Birmingham (2014); Pièces à conviction at the CRAC in Sète; Michel François: Le trait commun at the Ecole des Beaux-Arts in Paris (2012); 45.000 affiches, 1994-2011 at MAC's, Site du Grand Hornu (Belgium); 22.500 affiches, 1994-2011 at the CCC Tours (2011); and Plans d'évasion at SMAK in Gand and at IAC in Villeurbanne (itinerant exhibition, 2009–10).

Since the opening of the Parc Culturel de Rentilly in 2006, the frac île-de-france has been a partner of the Marne et Gondoire conurbation, developing the contemporary art element. The rehabilitation of the castle, which is part of the estate, has made it possible – thanks to the initiative of the frac île-de-france – to develop an extra-ordinary project: entrusting this rehabilitation to an artist, Xavier Veilhan – accompanied by the architects Elisabeth Lemerrier and Philippe Bona, and the set designer Alexis Bertrand – to turn the castle into both an artwork, no less, and a place totally suited to the showing of artworks. Together with le plateau in Paris, the château de Rentilly is the frac île-de-france's second exhibition venue, whose programme is focused on the presentation of its collection as well as other invited collections, public and private alike, be they French or foreign.

## Available pictures



Michel François, *Cactus gravé*, 2001.  
Collection frac île-de-france,  
© Adagp, Paris.



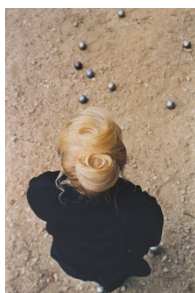
Michel François, *Jeune fille à la Havane*, 1996.  
Collection frac île-de-france,  
© Adagp, Paris.



Michel François, *Mexico City*, 2005.  
Collection frac île-de-france,  
© Adagp, Paris.



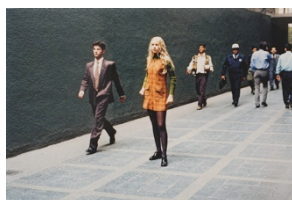
Michel François, *Speaker's Corner 1*, 2006.  
Collection frac île-de-france,  
© Adagp, Paris.



Michel François, *S. aux boules*, 2000.  
Collection frac île-de-france,  
© Adagp, Paris.



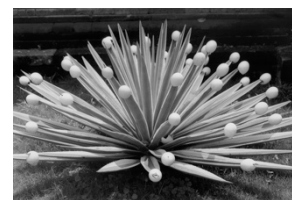
Michel François, *Feu dans la piscine*, 2002.  
Collection frac île-de-france,  
© Adagp, Paris.



Michel François, *Jeune fille à l'arrêt*, 1999.  
Collection frac île-de-france,  
© Adagp, Paris.



Michel François, *Trouer*, 2012.  
Collection frac île-de-france,  
© Adagp, Paris.



Michel François, *Cactus œufs*, 1999.  
Collection frac île-de-france,  
© Adagp, Paris.

↗  
← frac  
↙ île-de-france  
le château  
rentilly

**MARNEetGONDOIRE**

communauté d'agglomération

  
Parc culturel de Rentilly

### Parc culturel de Rentilly/ frac île-de-france, le château

#### Adress

Domaine de Rentilly  
1 rue de l'Etang  
77600 Bussy-Saint-Martin  
+33 (0)1 60 35 43 50

#### Opening hours

Wednesday and Saturday 2.30 – 5.30 pm  
Sunday 10.30 am to 1 pm and 2.30 – 5.30 pm

#### Access

RER A Torcy stop, then on foot (15 minutes), or PEP's line 21 bus (Rentilly stop), or lines 46/25/13 (Cèdre stop)

**\*On Saturday and Sunday from 2pm, 'AMU' shuttle buses connect the RER A station 'Torcy' (bus station PEP's 21) to le château.**

Admission free